



Your Solutions Partner

# Instruction Sheet

## FLM 100 Retro Fit Full Rack Split

In this package, you are receiving an upgrade kit for your front line bread display cabinet intended to enhance the hold time of bread in the cabinet. Included are instructions to install the upgrade kit.

When holding bread in the display cabinet, holding full batches and rotating product will yield the best results.

Lastly, if your restaurant utilizes a Flexbake5 All in One oven, there is an updated recipe that will need to be loaded into your oven. The recipe changes are as follows:

### Full Bread & Full Bread w/Cheese Recipes:

Stage 1: Change "stage time" to 18 minutes, "humidity time" to 18 minutes, and "H2O on Time" to 1.

Stage 2: Change "stage time" to 6 minutes

Stage 3: Change "H2O on Time" to 1

\*all other values will remain as is

### Half Bread & Half Bread w/Cheese Recipes:

Stage 1: Change "stage time" to 18 minutes, "humidity time" to 18 minutes, and "H2O on Time" to 1.

Stage 2: Change "stage time" to 6 minutes

Stage 3: Change "H2O on Time" to 1

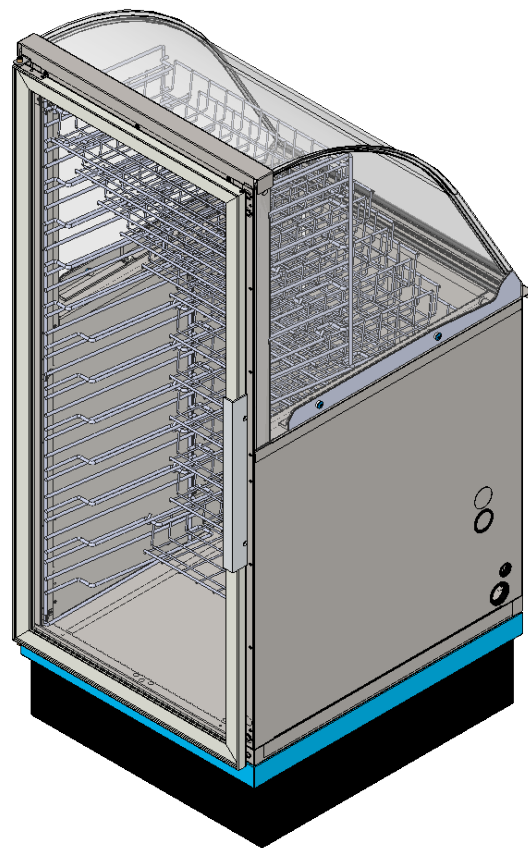
\*all other values will remain as is

Should you have any questions during the installation of your upgrade kit or with programming the updated Flexbake5 All in One oven recipes, please call our technical service team at: 1-800-735-3853 ext. 1.

Regards,

Your Team and Duke Manufacturing

1-800-735-3853      [www.dukemfg.com/Subway](http://www.dukemfg.com/Subway)



**CAUTION:** Please read these instructions completely before attempting to install, operate or service this equipment.



*This manual is Copyright © 2019 Duke Manufacturing Co. All rights reserved.  
Reproduction without written permission is prohibited. Duke is a registered  
trademark of the Duke Manufacturing Co.*

**P/N 2503962  
REV B 08/16/2019**

## INSTALLATION

### Tools Required:



Phillips Head Screwdriver



Dry Erase Pen



3/8" Nut Driver or Socket & Ratchet

Clean Rags

Isopropyl Alcohol

### Parts Included:

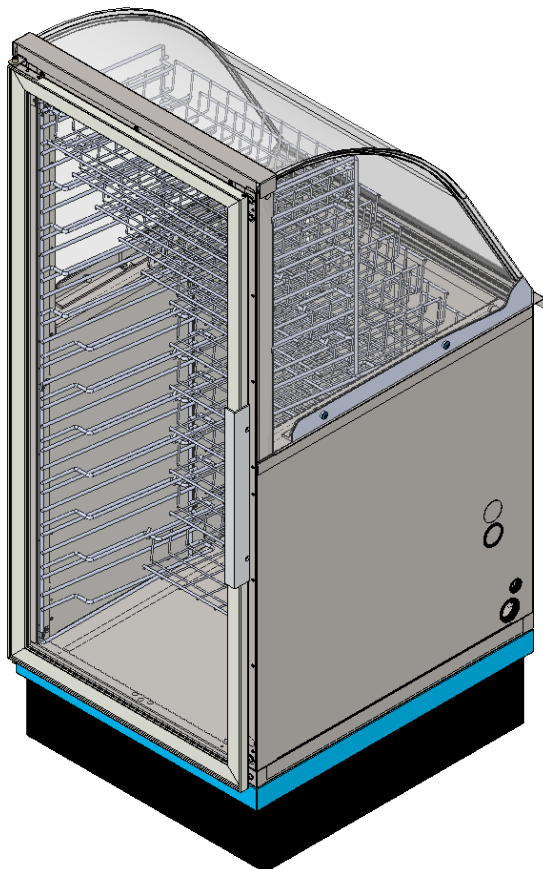
- Partition Plate "A"
- Partition Plate "B"
- Support Bracket
- 10-24 Acorn Nuts
- Edge Trim Gasket,
- Aluminum Strip with Adhesive
- Alcohol Pads
- Magnetic Door Gasket
- Silicone/Sealant Tube

### CAUTION

Please read these instructions completely before attempting to install, operate or service this equipment.

#### Step 1

Verify that your bread cabinet has full height wire racks with wire baskets as shown below.



#### Step 2

Peel all vinyl off of all stainless-steel parts supplied in the kit

#### Step 3

Make sure unit is disconnected from any power source.

#### Step 4

Remove all bread baskets from the cabinet and set aside.

#### Step 5

Loosen all the screws holding the side wire racks.

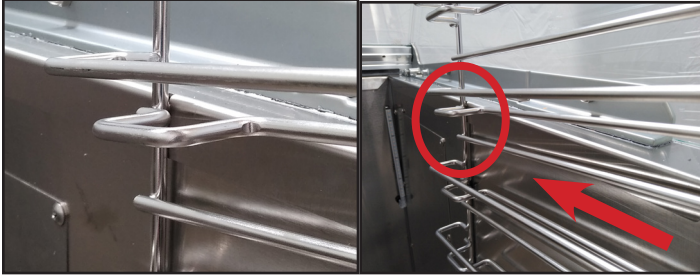
**Do not remove.**



## INSTALLATION - continued

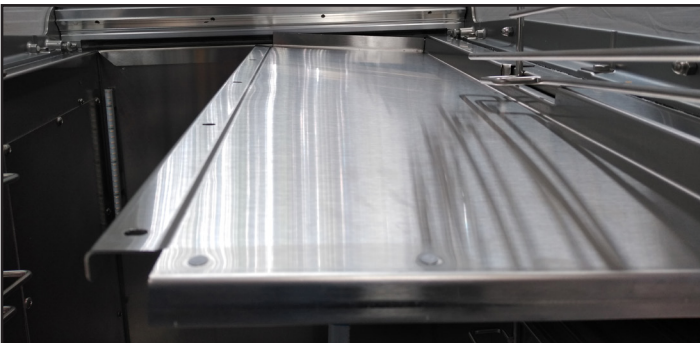
### Step 6

Verify that the front of the wire rack is properly located in the notch. If not push rack forward to locate in notch. Do this for both sides.



### Step 7

Position the right partition plate on the right side of the cabinet.



**NOTE:** This is the panel with the ob-round holes



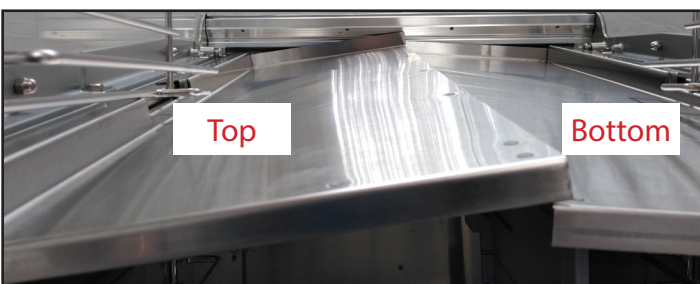
**NOTE:** You will have to hold this panel in place while positioning the left panel.

### Step 8

While holding the right panel position the left panel.



**NOTE:** This is the panel with the pem-studs along the center edge.

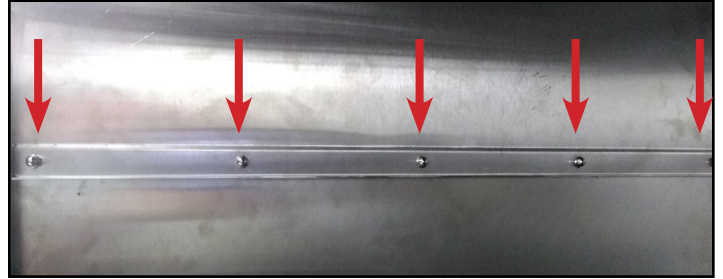


### Step 9

While holding both panels lower the center of each panel until you can align the pem-studs with the ob-round holes and then level panels.

### Step 10

Hand thread five 10-24 acorn nuts onto the studs to keep everything held together until later steps.



### Step 11

Attach angle support bracket under front edge of divider plates with four 10-24 acorn nuts.

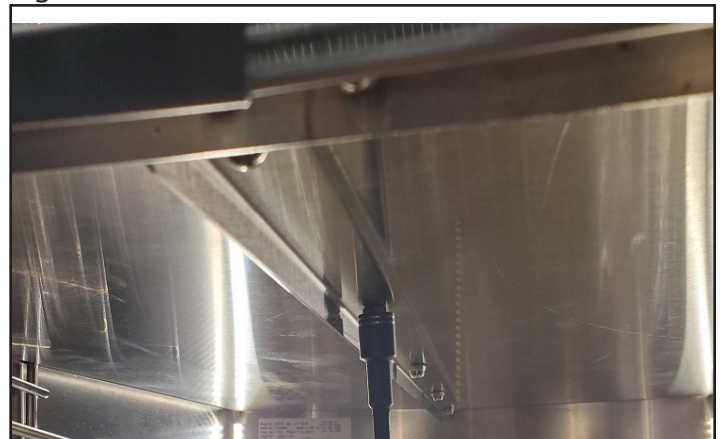


**NOTE:** Make sure solid flange is pointing down and away from the front edge.



### Step 12

Tighten all 10-24 Acorn Nuts.





## INSTALLATION - continued

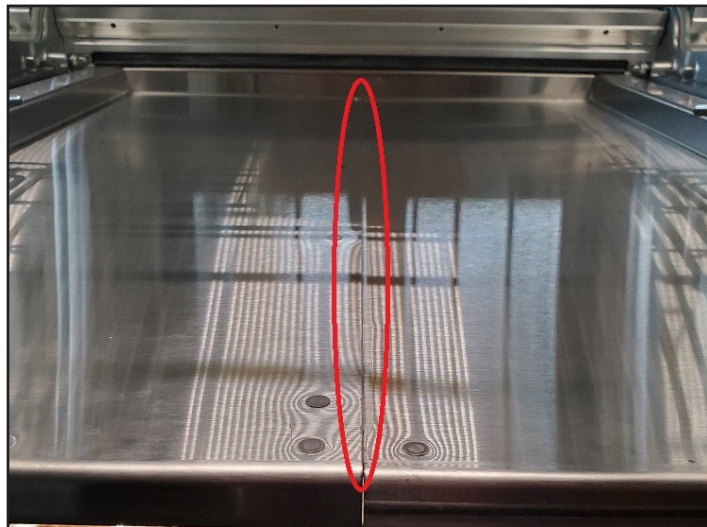
### Step 13

Make sure shelf is pushed all the way to the front of the cabinet.



### Step 15

Clean the area around the entire length of the seam using a rag and isopropyl alcohol.



### Step 14

Tighten all the screws for the side wire racks.



### Step 16

Apply a thin bead of silicone to the entire length of the seam.

- If necessary, smooth out the silicone to form a uniform seal along the entire seam.
- Remove/clean excess silicone using a damp rag.



## INSTALLATION - continued

### Step 17

Attach edge trim gasket to the front flange of the partition plate assembly. Make sure that the gasket is centered right to left on the flange with the same amount overlapping each side of the cabinet frame. You may need to open and close the door to make sure the edge trim gasket is not interfering with the door gasket. Once it is properly located be sure to push the gasket all the way onto the flange making sure it is secure.



### Step 18

With the door closed, place the non-adhesive side of the aluminum strip against the glass and position it so it completely covers the previously installed gasket.



**NOTE:** Too high or too low will negatively affect the performance and sealing of the cabinet.



Using a **dry erase** marker, draw a line all the way across the glass on both the top and bottom of the aluminum strip, using it as a straight edge.





## INSTALLATION - continued

### Step 19

Open the door. On the inside clean glass with alcohol wipes where the aluminum strip is to be placed.



### Step 20

Take the Aluminum strip with the double sided tape and peel off the backing.



**NOTE:** be careful not to touch the adhesive as the oil from your fingers will cause it not to adhere properly.



### Step 21

Place one end of the aluminum strip against the glass, making sure that it is within the two lines drawn from step 18. Once one side is attached to the glass, line up the rest of the aluminum strip with the drawn lines and firmly press down to make sure it is properly adhered. The aluminum strip should be centered in between both lines from step 18.



### Step 22

Close the door and verify that the aluminum strip makes contact with the gasket.



### Step 23

Using the isopropyl alcohol clean the lines off of the outside of the glass.

### Step 24

Open door and remove the door gasket.



**NOTE:** Start at one corner and lightly pull the gasket from the door.



## INSTALLATION - continued

### Step 25

Starting at a corner, start pressing the new gasket into the channel for the gasket. Make sure entire gasket is pressed into place including the corners.

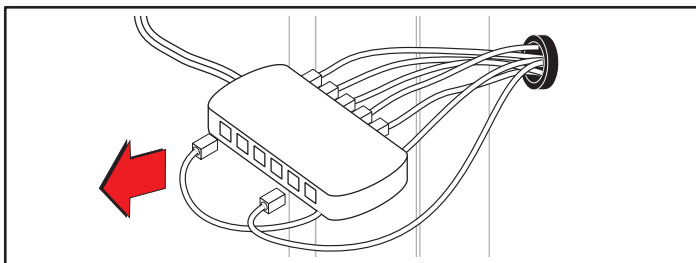


### Step 26

Reinstall bread baskets removed in step 1.

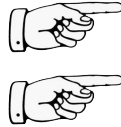
### Step 27

Unplug all of the lights in the bread cabinet from the power supply located on the adjacent unit. This is done to help extend the holding time and improve the quality of the bread.

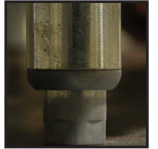


### Step 28

Level Unit. To ensure the door of this unit seals completely, the unit must be fully leveled in all directions.

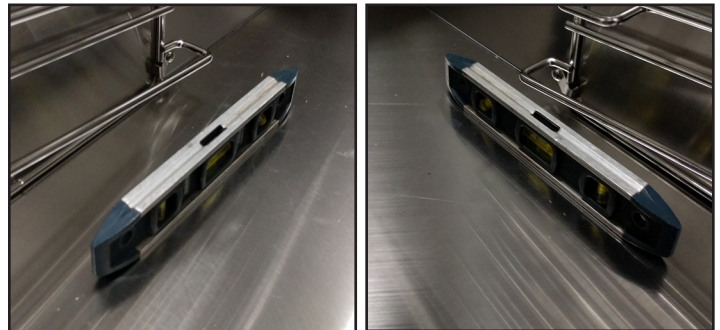


**NOTE:** This must be done before the unit is sealed to the floor or built into a curb.  
**NOTE:** The unit can be leveled by adjusting the feet using adjustable pliers.



### Step 28A

Level Unit front to back on both sides.



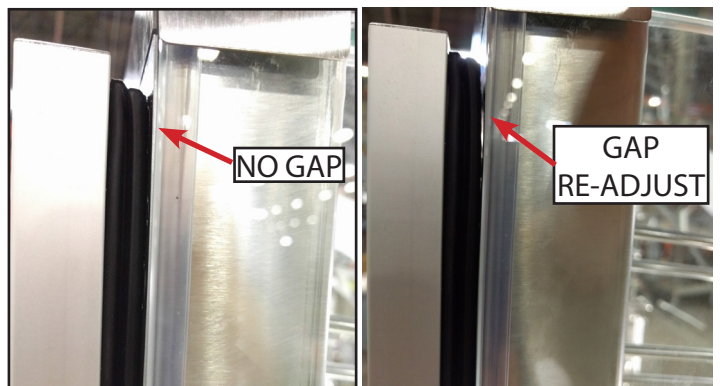
### Step 28B

Level unit side to side, both front and back.



### Step 28C

Check the top and bottom corner seal of the door gasket. There should be no gap.



**UPDATE - COMPLETE**

## NOTES



**Duke Manufacturing Co.**  
2305 N. Broadway  
St. Louis, MO 63102

Phone: 314-231-1130  
Toll Free: 1-800-735-3853  
Fax: 314-231-5074

[www.dukemfg.com](http://www.dukemfg.com)